



☎ 0861 - 2317969 Extn. 2464
2317968 Extn. 2464
Fax : 0861-2311968

NARAYANA COLLEGE OF NURSING

CHINTHAREDDYPALEM :: NELLORE - 524 003. A.P.

Recognized by Indian Nursing Council vide letter No. 18-916/2002/inc dated : 08.11.2002, Affiliated to NTR University of Health Sciences, A.P. Vijayawada
e-mail : narayana_nursing@yahoo.co.in website : www.narayanannursingcollege.com

DEPARTMENT OF NURSING RESEARCH

Ref No: ACD/ WS/ CIR-04

Date: 16-01-2018

CIRCULAR

This is to inform you that Department of Nursing Research is planned to organize a Work shop on "SAMPLE SIZE CALCULATION" at Seminar Hall, 22/1/2018 from 9am-5pm. All are expected to participate and get empowered with current updates.

A. J. S.
PRINCIPAL

Principal
NARAYANA COLLEGE OF NURSING
Chinthareddypalem,
NELLORE - 524 003.



Copy to

NAAC Coordinator
Head's of all Department

NARAYANA COLLEGE OF NURSING

CHINTHAREDDYPALEM :: NELLORE - 524 003. A.P.

Recognized by Indian Nursing Council vide letter No. 18-916/2002/inc dated : 08.11.2002, Affiliated to NTR University of Health Sciences, A.P. Vijayawada
 e-mail : narayana_nursing@yahoo.co.in website : www.narayanannursingcollege.com

WORKSHOP ON SAMPLE SIZE CALCULATION PROGRAM SCHEDULE

Date:22-1-2018

Time	Agenda	Speakers
09:00-09:15am	Pre Test	All Participants
09:15- 09:20am	Prayer Song	I Year M.Sc (N) Students
09:20-09:25am	Welcome Song	I Year M.Sc (N) Students
09:25-09:30 am	Welcome Speech	Mrs. K. Kantha.Head of the Department of Nursing Research
09:25-09:30 am	Lamp lighting	Dignitaries
09:30-09:40 am	Introduction	Dr. Indira .A, Principal,
09:40-09:55am	Estimating sample size with Absolute relative precision .	Mrs. Latha A, Prof, Head of the Department of Medical surgical Nursing
09:55-10:25am	Estimating sample size with relative precision .	Mrs, B.Vanaja kumari, Prof Head of the Department of Nursing Education
10:25-10:55am	Estimating sample size using simple random sampling	Dr. Rajeswari H Head of the Department of Psychiatric Nursing
10:55-11:15am	REFRESHMENTS	
11:15-11: 40am	Estimating sample size for the difference between two proportions with absolute precision	Ms. Revathi, Assoc.Prof, Department of Obstetrics and Gynecological Nursing
11:40-12:00pm	Estimating sample size for the difference between two proportions with standard error .	B. Madhavilatha Assoc.Prof, Department of Medical and Surgical Nursing
12:00-12:30pm	sample size for the two population proportions with one –tail test	G.Ramya, Head of the Department of Pediatric Nursing
12:30-01:00pm	sample size for the two population proportions with two –tail test	Ms. Elizabeth Jasmine, Head of the Department of Nursing Foundation
01:00-02:00pm	LUNCH	
02:10-03:30pm	Sample size calculation	Ms. Radha Saini, Fellow UICC, Geneva
03:30-04:00pm	Post Test	All Participants
04:00-04:25pm	Certificate Distribution	Presenters
04:26-04:40pm	Vote Thanks	M.Sc(N) II yr student Student
04:40-04:50pm	National Anthem	



A. Indu
 PRINCIPAL

Principal
NARAYANA COLLEGE OF NURSING
 Chinthareddypalem,
 NELLORE - 524 003.

NARAYANA COLLEGE OF NURSING

CHINTHAREDDYPALEM :: NELLORE - 524 003. A.P.

Recognized by Indian Nursing Council vide letter No. 18-916/2002/INC dated : 08.11.2002, Affiliated to NTR University of Health Sciences, A.P. Vijayawada
 e-mail : narayana_nursing@yahoo.co.in website : www.narayanannursingcollege.com

WORKSHOP ON SAMPLE SIZE CALCULATION

DATE: 22-01-2018

REPORT

First of all, The Nursing Research Department on behalf of NARAYANA COLLEGE OF NURSING, thank Ms. Radha Saini, Fellow UICC, Geneva, for being as a resource person for "WORKSHOP ON SAMPLE SIZE CALCULATION", really we all are indebted to Ms. Radha Saini, Fellow UICC, Geneva, for lending us this encouragement and giving us the opportunity for proving our selves.

The program was attended by all eminent faculties from Narayana Medical, We thank Dr. Indira.A, Principal, Narayana College of Nursing, for conducting this workshop.

Pretest was conducted to 42 participants for 15 min. The workshop was started with the prayer song by I Year Msc(N) students, followed by welcome song, Mrs K.Kantha Assoc.prof, Head of the Department of Nursing Research Department welcome the gathering.

The Guest of Honor Ms Radha Saini, Organizing chairperson, Dr.Indira.A & other dignitaries lightened the tradition lamp, followed by thunderous applause by the participants.



Fig -1 Lamp lighting by Dignitaries

Dr. Indira.A Principal, has given brief introduction regarding about workshop on Sample size calculation. Mrs.LATHA . A M.Sc (N) PROF, explained about estimating

NARAYANA COLLEGE OF NURSING

CHINTHAREDDYPALEM :: NELLORE - 524 003. A.P.

Recognized by Indian Nursing Council vide letter No. 18-916/2002/inc dated : 08.11.2002, Affiliated to NTR University of Health Sciences, A.P. Vijayawada
 e-mail : narayana_nursing@yahoo.co.in website : www.narayanannursingcollege.com

sample size with absolute relative precision ,Mrs.B. VANAJA KUMARI, M.SC(N), PROF, explained about estimating sample size with relative precision.

Estimating Sample Size Relative Precision

The term **Relative precision** refers to estimation of population parameter to within a defined percentage of the population parameter itself. This is described as '*Estimating P to within "E" of P*'.

Formula

$$n = Z^2 \cdot P \cdot (1-p) / (e \cdot p)^2$$



Mrs. H Rajeswari.Prof, vice principal, presented on estimating sample size with using simple random sampling. Ms. Revathi, M. Sc (N), presented about estimating sample size for the difference between two proportions with absolute precision.

At 12:00 to 12;30pm Ms.G.Ramya ,M.Sc(N) Head of the Department of Pediatric nursing, presented about sample size for the two population proportions with one –tail test.

At 12:30 to 1:00pm Ms. Elizabeth Jasmine, M. Sc(N), Head of the Department of nursing foundation explained about sample size for the two population proportions with two-tail test,

Post lunch from 2:00pm to 3:30 pm The Guest Of Honour Ms Radha Saini, Fellow UICC, Geneva, given the lecture for an hour on sample size calculation. She emphasized on the Sample size determination is the act of choosing the number of observations or replicates to include in a statistical sample. The sample size is an important feature of any empirical study in which the goal is to make inferences about a population from a sample. In practice, the sample size used in a study is determined based on the expense of data collection, and the need to have sufficient statistical power. In complicated studies there may be several different sample sizes involved in the study. For example, in a stratified survey there would be different sample sizes for each stratum. In a census, data are collected on the entire population, hence the sample size is equal to the population size.

NARAYANA COLLEGE OF NURSING

CHINTHAREDDYPALEM :: NELLORE - 524 003. A.P.

Recognized by Indian Nursing Council vide letter No. 18-916/2002/inc dated : 08.11.2002, Affiliated to NTR University of Health Sciences, A.P. Vijayawada

e-mail : narayana_nursing@yahoo.co.in website : www.narayanannursingcollege.com

In experimental design, where a study may be divided into different treatment groups, this may be different sample sizes for each group.

Pretest and post-test knowledge questionnaire are distributed. Data is collected and analyzed.

The following scoring key is used to analyze the data.

OVERALL ANALYSIS:

DISTRIBUTION OF LEVEL OF KNOWLEDGE

Table: 1 frequency and percentage distribution of knowledge in pretest and post test.

N=42

GRADE	PRE TEST		POST-TEST	
	FREQUENCY	PERCENTAGE	FREQUENCY	PERCENTAGE
	(F)	(%)	(F)	(%)
A+	0	0	16	39.4
A	3	5.3	20	45.9
B+	13	31.7	6	14.7
B	12	31	0	0
C	9	20	0	0
D	5	12.0	0	0
TOTAL	42	100	42	100

With regard to the level of knowledge on sample size calculation among participants, the pretest results shows that 3(5.3) scored "A" grade, 13 (31.7%) participants scored "B+" grade, 12 (31%) participants scored "B" grade, 8 (20%) scored "C", D grade scored 5(12%) and no participants scored A+. While in the post test, the knowledge level improved as 16(39.4 %) participants scored "A+" grade, 20 (45.9 %) scored "A" grade, and 6 (14.7%) of participants scored "B+" grade, and there was no participants in B, C and D grades. The results indicate that participants level of knowledge on sample size calculation has increased and participants has benefited from the programme.

NARAYANA COLLEGE OF NURSING

CHINTHAREDDYPALEM :: NELLORE - 524 003. A.P.

Recognized by Indian Nursing Council vide letter No. 18-916/2002/inc dated : 08.11.2002, Affiliated to NTR University of Health Sciences, A.P. Vijayawada
 e-mail : narayana_nursing@yahoo.co.in website : www.narayanannursingcollege.com

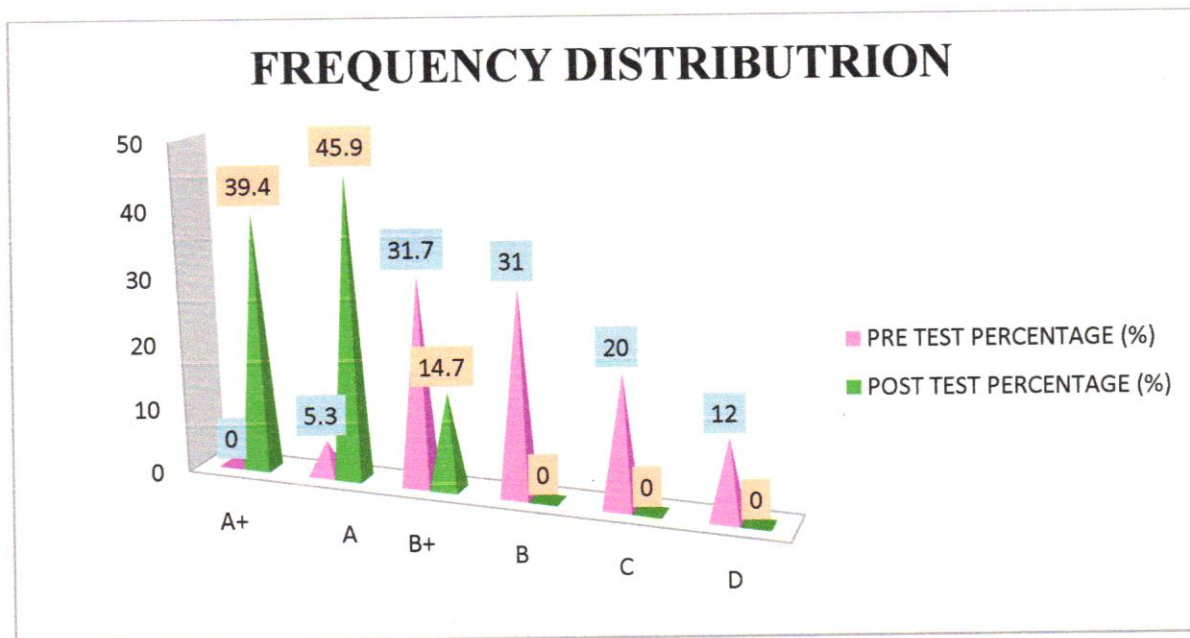


FIG: 4 Frequency distribution of knowledge in pretest and post test.

Table no: 2: Frequency and percentage distribution of feedback analysis among participants

N=42

DESCRIPTION	PARTICIPANTS	
	FREQUENCY (F)	PERCENTAGE (%)
EXCELLENT	21	47.9
VERY GOOD	16	40.4
GOOD	5	11.7
AVERAGE	0	0
POOR	0	0
TOTAL	42	100

The above table depicts that 48% of participants opted that the workshop was excellent and 41% of delegates chosen that it was very good very few people only given that it was good by this feedback we can say that the workshop was successful.

NARAYANA COLLEGE OF NURSING

CHINTHAREDDYPALEM :: NELLORE - 524 003. A.P.

Recognized by Indian Nursing Council vide letter No. 18-916/2002/inc dated : 08.11.2002, Affiliated to NTR University of Health Sciences, A.P. Vijayawada

e-mail : narayana_nursing@yahoo.co.in website : www.narayanannursingcollege.com

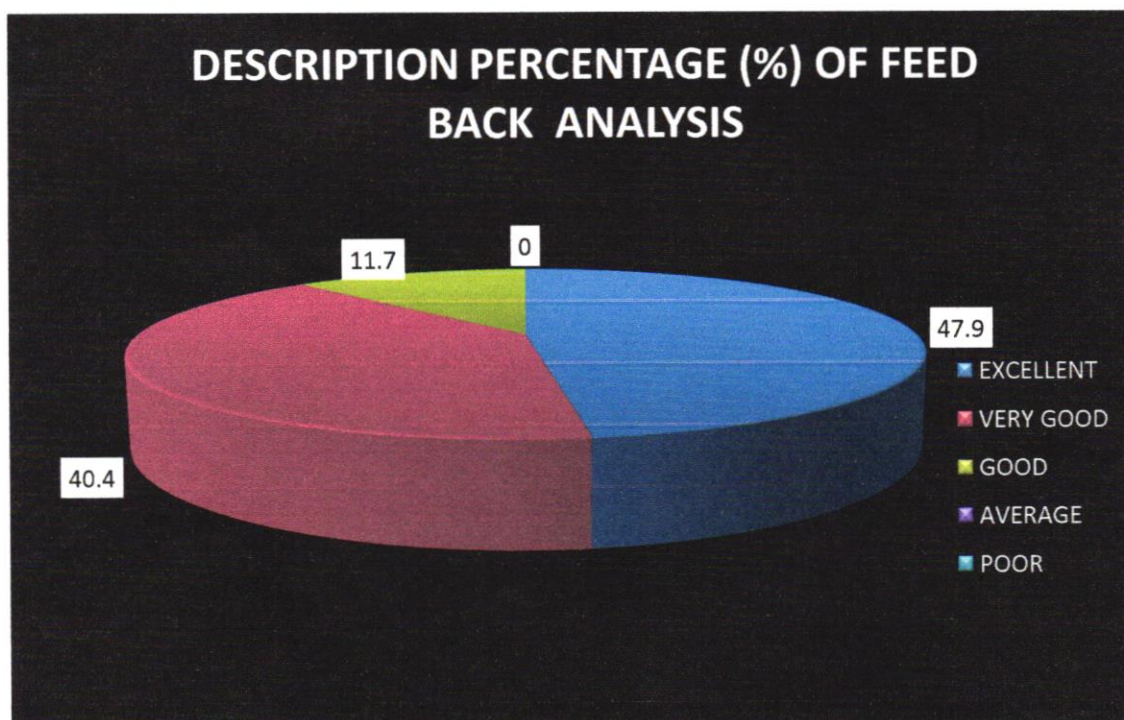


FIG no. 4: Percentage distribution of feed back analysis among participants



Fig-5 Involving the delegates by speakers effective talk

NARAYANA COLLEGE OF NURSING

CHINTHAREDDYPALEM :: NELLORE - 524 003. A.P.

Recognized by Indian Nursing Council vide letter No. 18-916/2002/inc dated : 08.11.2002, Affiliated to NTR University of Health Sciences, A.P. Vijayawada

e-mail : narayana_nursing@yahoo.co.in website : www.narayanannursingcollege.com

At the end of all the above speeches Dr.Indira.A, Principal, summarized the whole topic and involved the audience too in bringing up their view points during the discussion and distributed the certificates to all the speakers.

At the end the program Post test was conducted followed by vote of thanks given by MS. Divya vani MSc,(N)II year, and the program end with National anthem.

CONCLUSION: The Workshop was very effective because there was a significant increase of knowledge in post test compare to pretest.



Organizing secretary
Head of the Nursing Research Department
Narayana College of Nursing

HOD
Dept. of Nursing Research
NARAYANA COLLEGE OF NURSING
Chinthareddypalem,
NELLORE - 524 003.




PRINCIPAL

Narayana College of Nursing

Principal
NARAYANA COLLEGE OF NURSING
Chinthareddypalem,
NELLORE - 524 003.